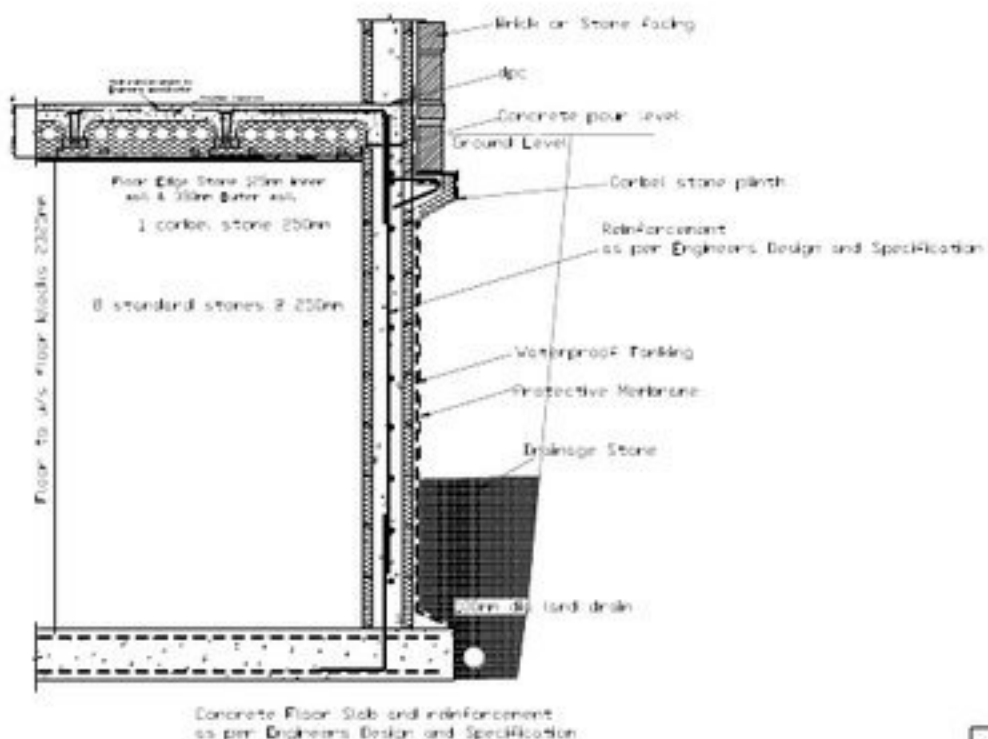
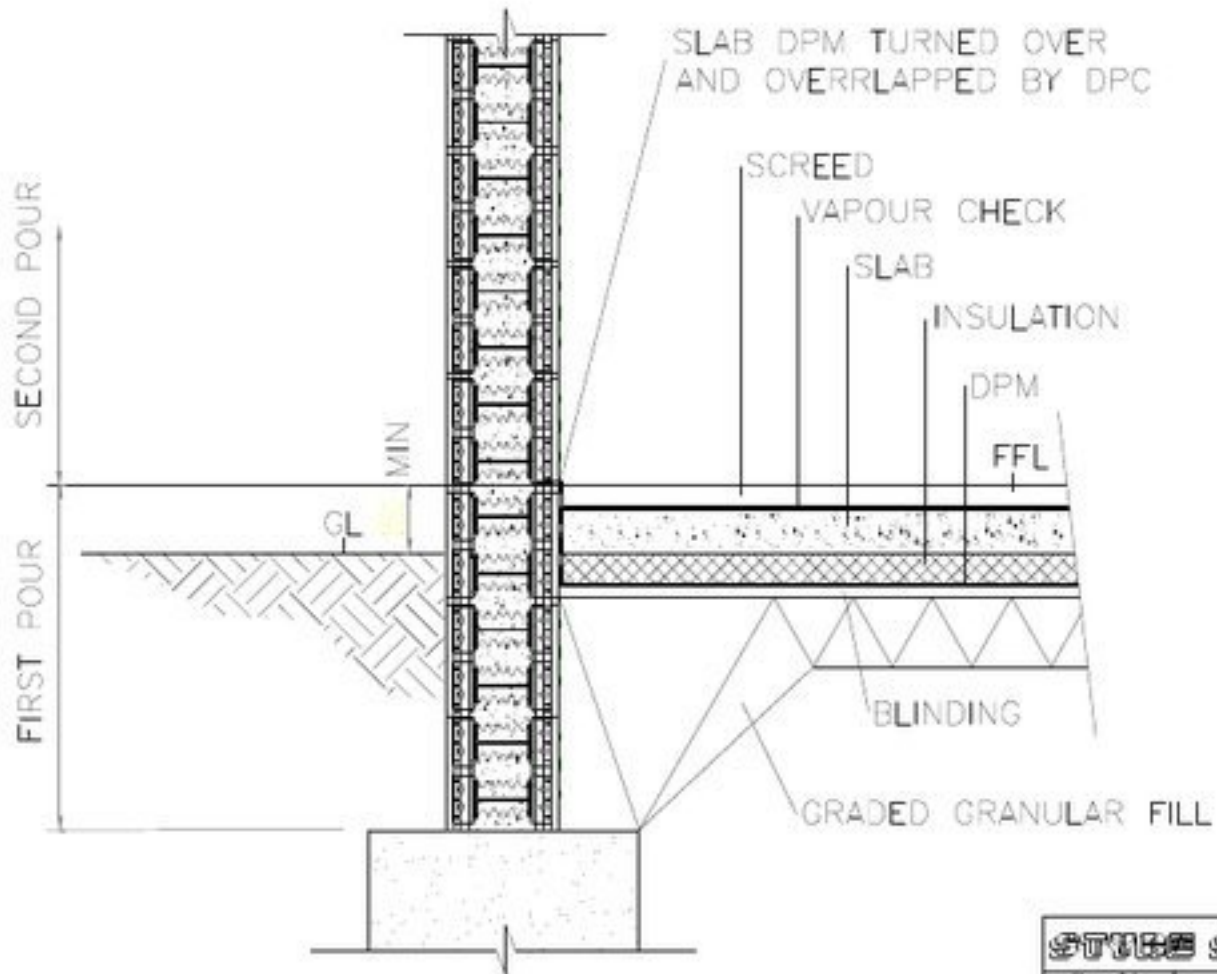


## TYPICAL SECTION BASEMENT WITH CORBEL PLINTH AND STYRO STONE FLOOR



**STYRO STONE**

21-01-2005



SECOND POUR

FIRST POUR

MIN

GL

SLAB DPM TURNED OVER  
AND OVERRLAPPED BY DPC

SCREED

VAPOUR CHECK

INSULATION

SLAB

DPM

FFL

BLINDING

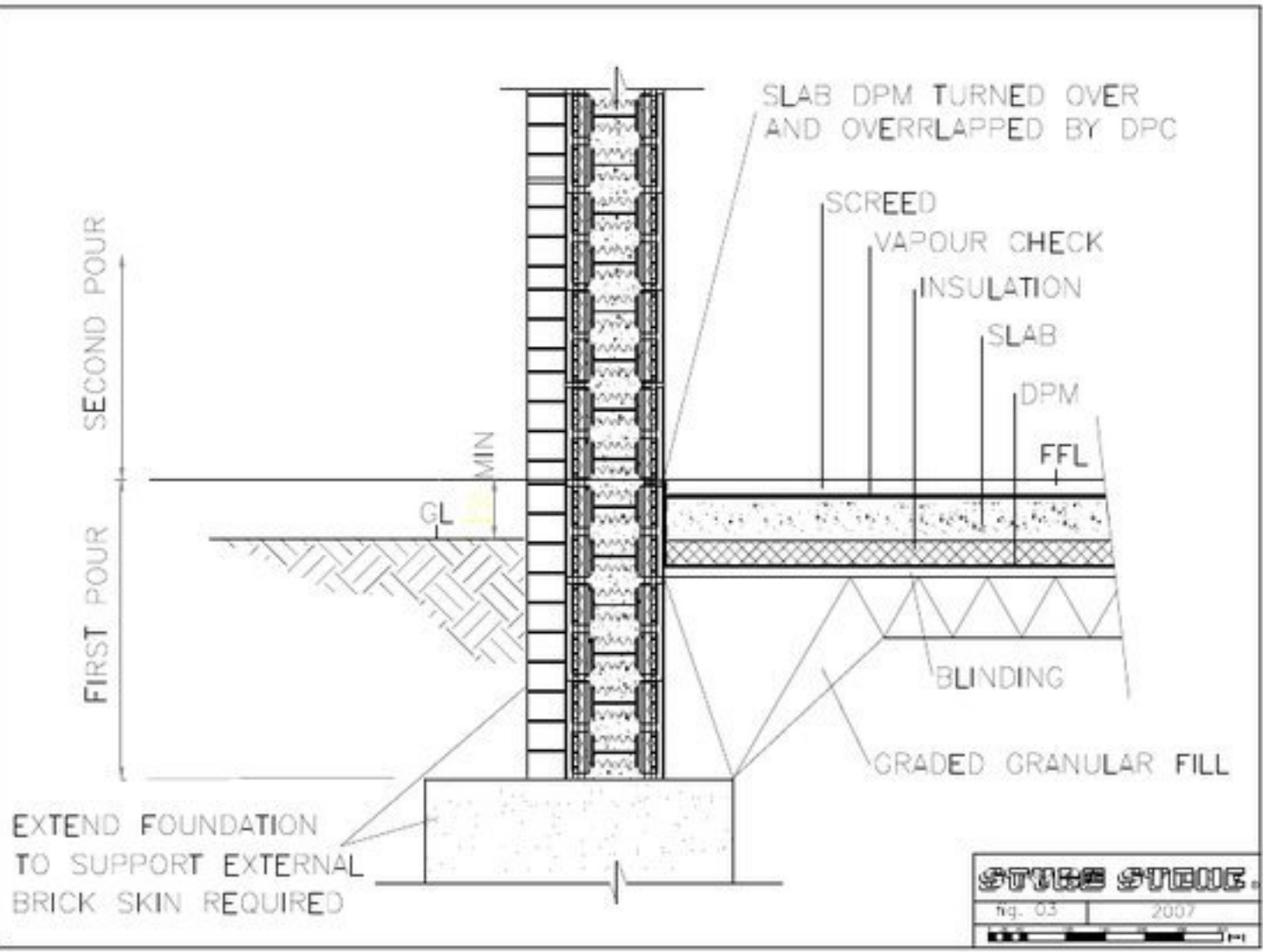
GRADED GRANULAR FILL

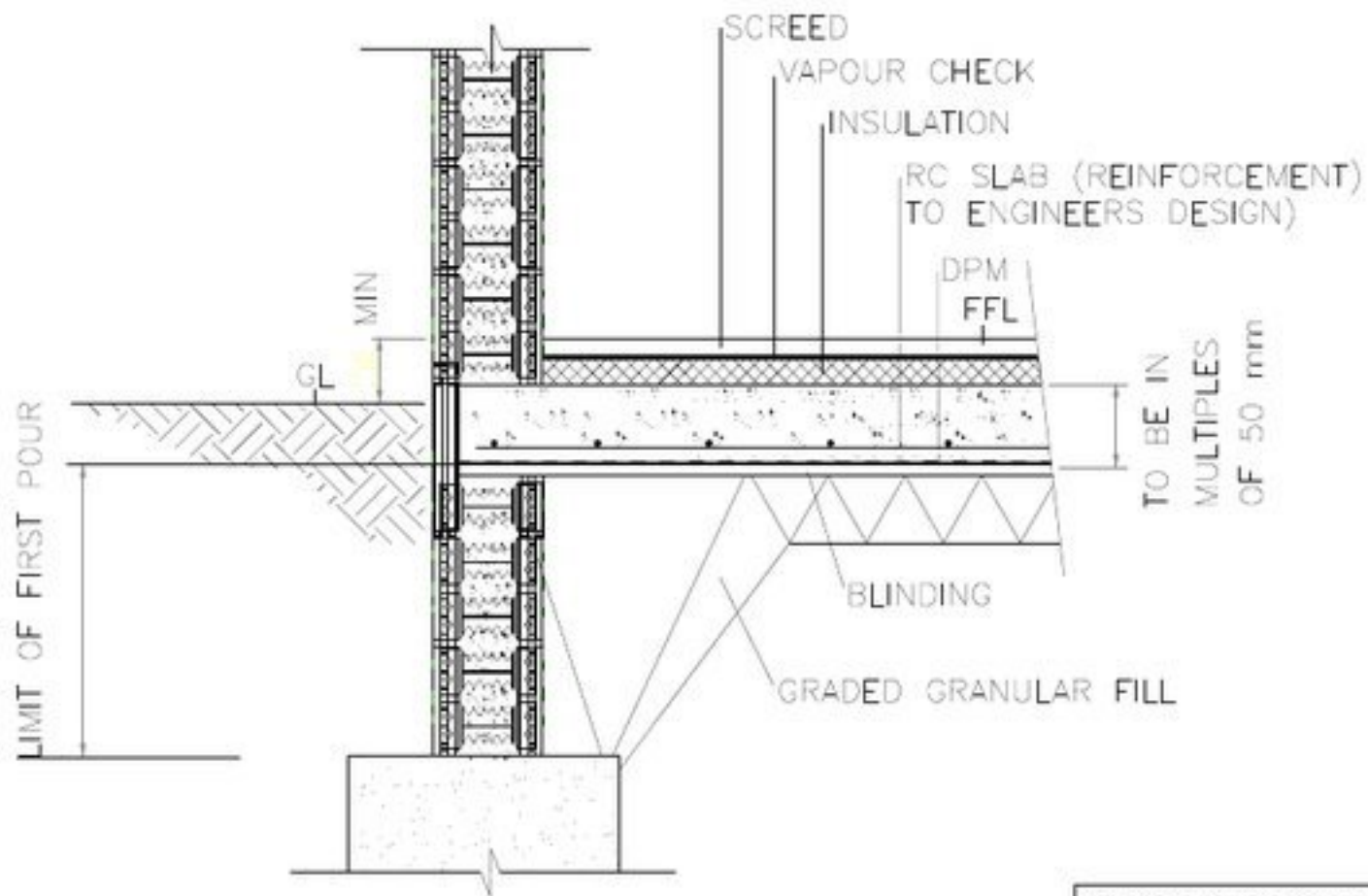
**STEEB STEEG**

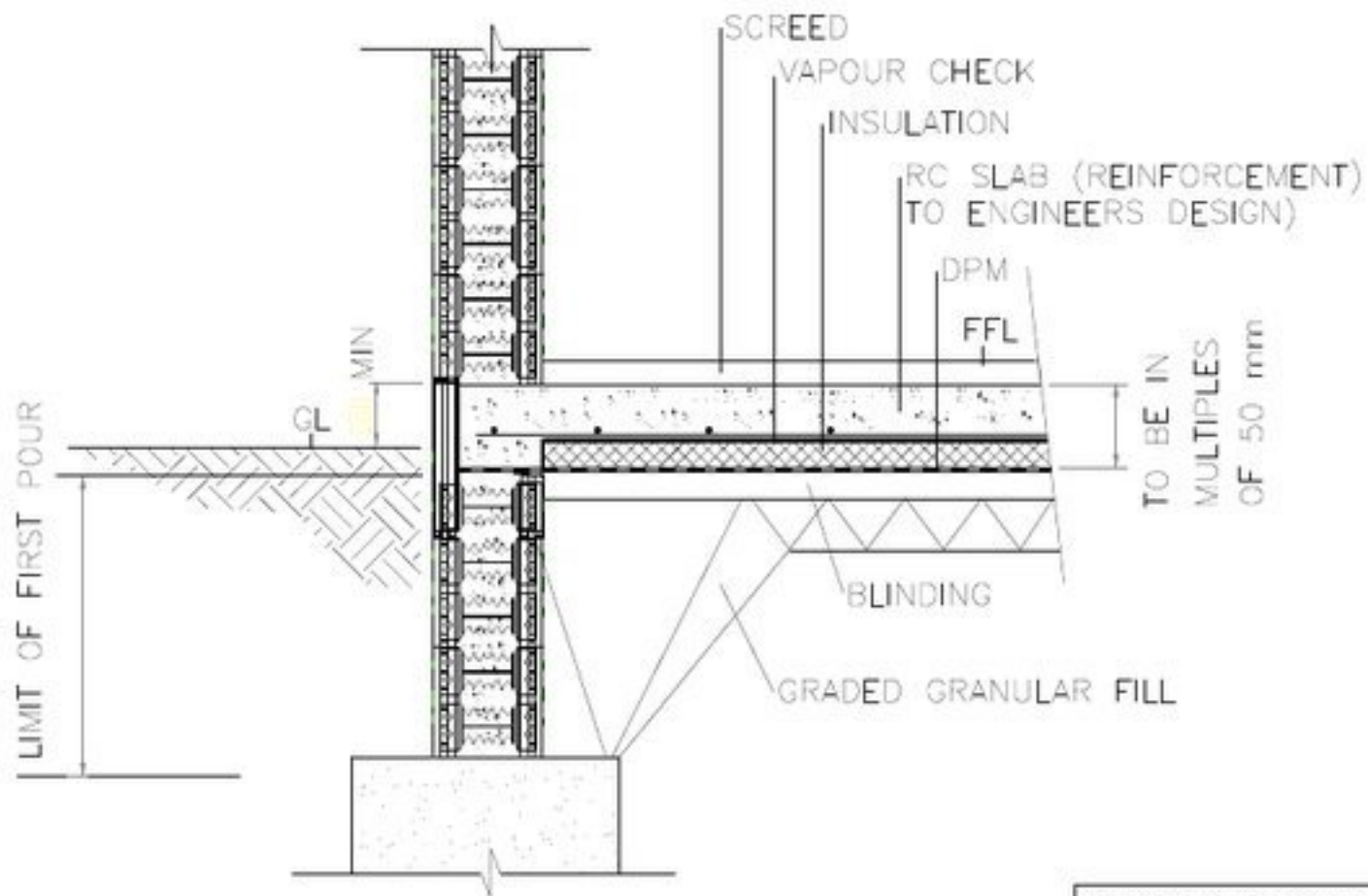
fig. 02

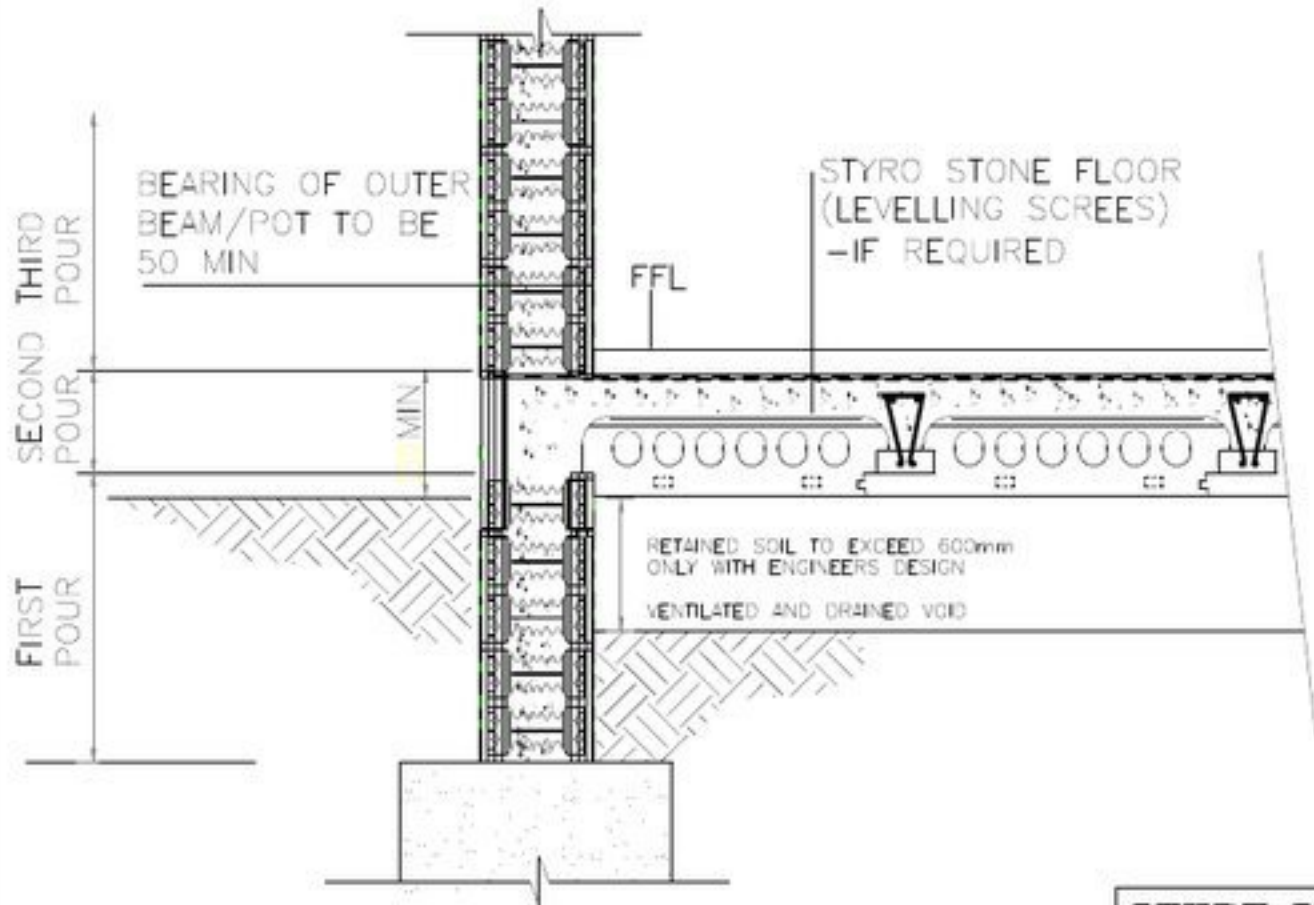
2007











BEARING OF OUTER  
BEAM/POT TO BE  
50 MIN

THIRD  
POUR

SECOND  
POUR

FIRST  
POUR

FFL

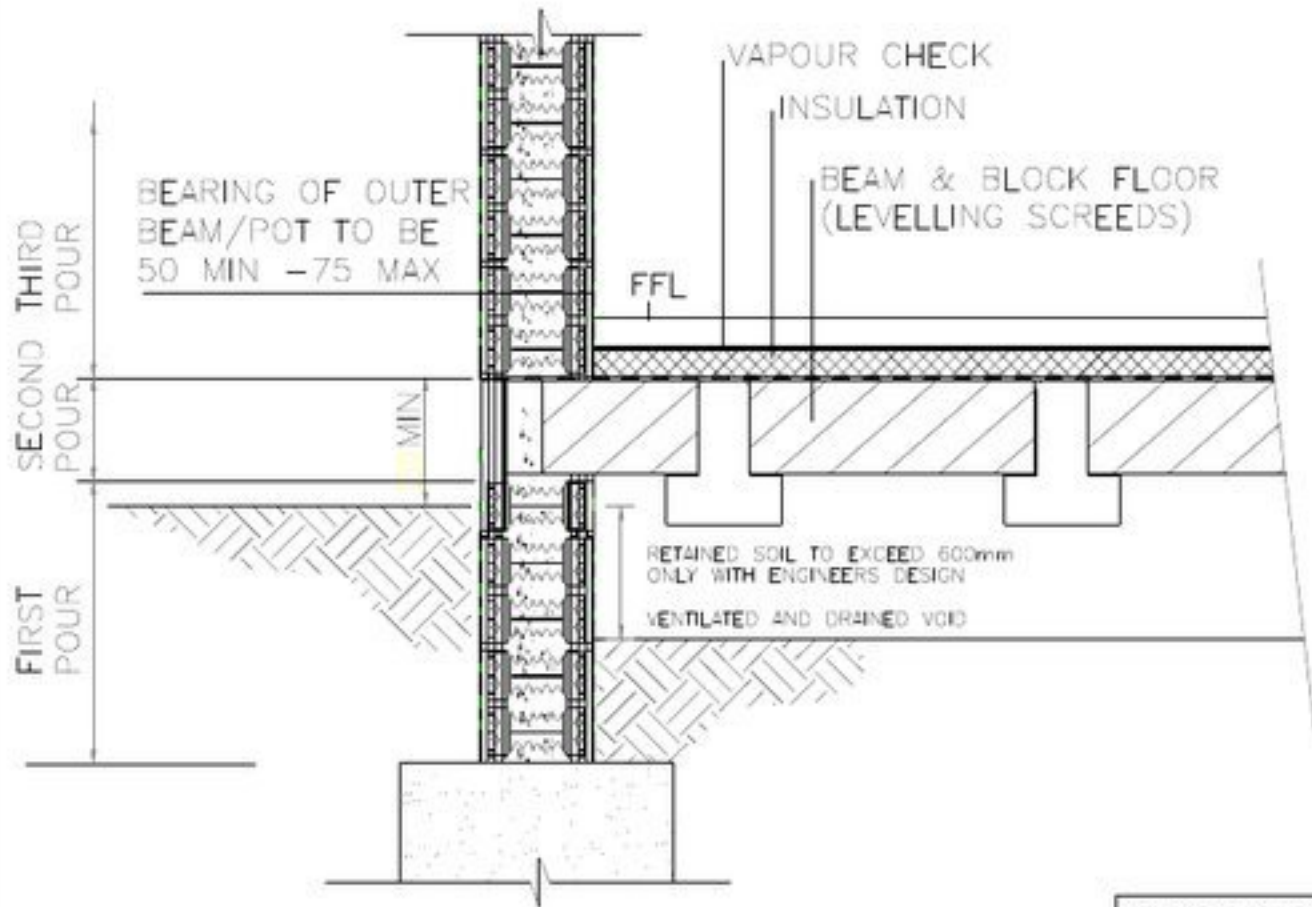
STYRO STONE FLOOR  
(LEVELLING SCREES)  
-IF REQUIRED

MIN

RETAINED SOIL TO EXCEED 600mm  
ONLY WITH ENGINEERS DESIGN  
VENTILATED AND DRAINED VOID

**STYRE STONE**

fig. 06_B	2007



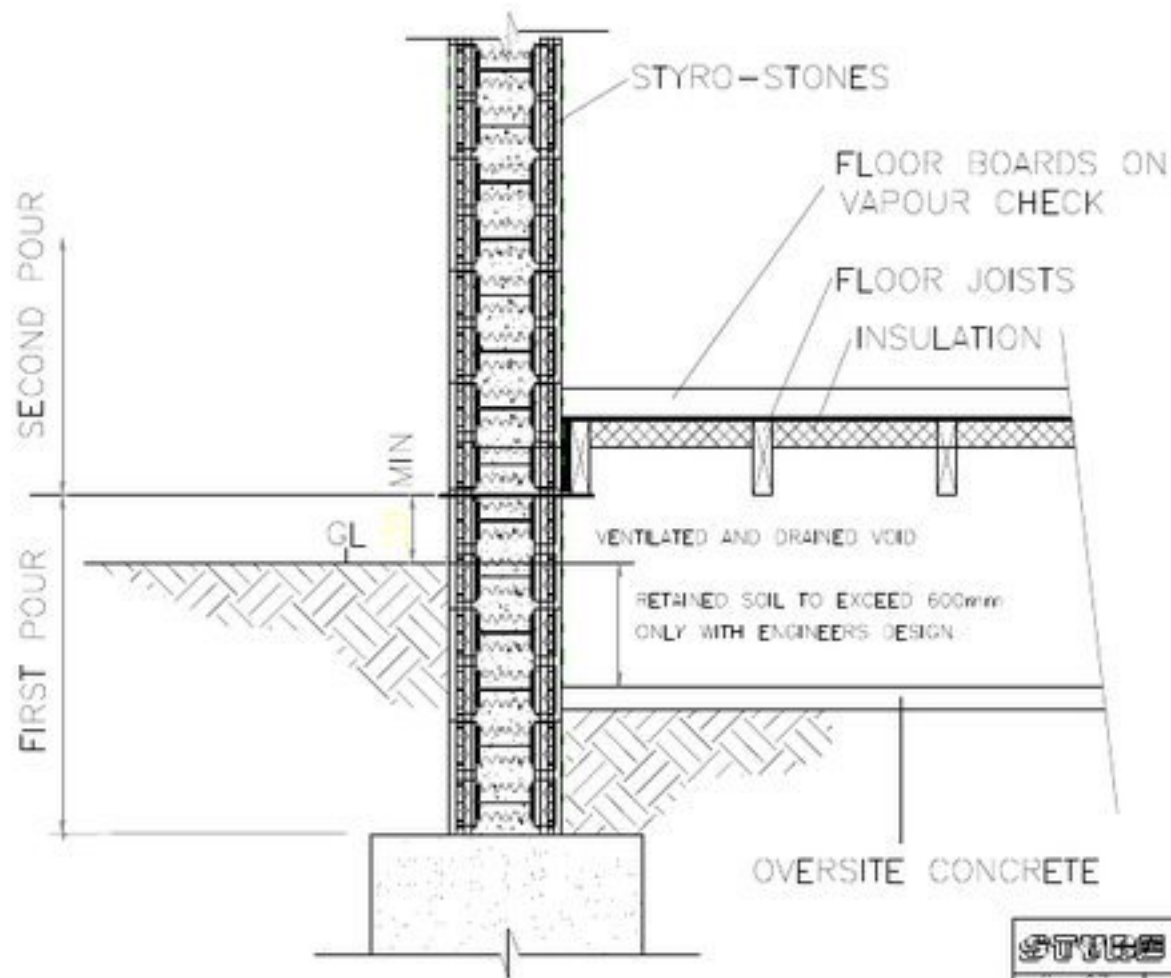
**STUBS STONE**

hg. 06

2007







**STYRE STONE**

fig. 07

2007



PROTECTION  
BOARD TO TANKING

FREE DRAINING  
GRANULAR  
FILL 40 SHINGLE SIZE

PERFORATED  
DRAINAGE PIPE  
ON GRANULAR BED

SCREED

INSULATION

DPM

RC SLAB

BLINDING

RETAINED SOIL TO EXCEED 600mm  
ONLY WITH ENGINEERS DESIGN

**STEEB STEEG**

fig. 08

2007

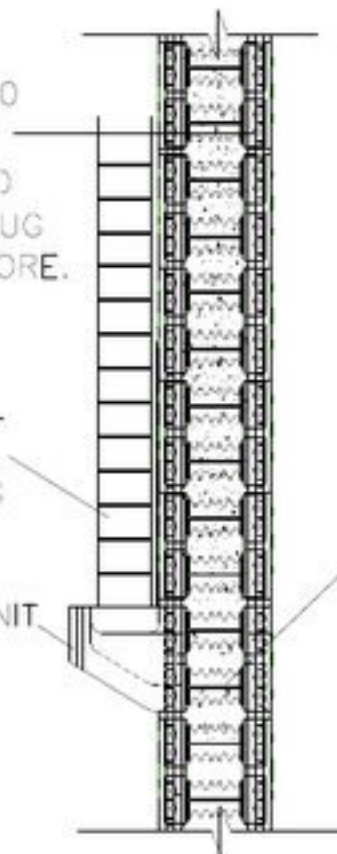


STAINLESS STEEL TIES@900  
HORIZONTALLY & 450  
VERTICAL CTRS STAGGERED  
CAST IN OR SCREW & PLUG  
DIRECT INTO CONCRETE CORE.

EXTERNAL  
MASONRY  
CLADDING

CORBEL UNIT

REFER TO  
APPENDIX 2 FOR  
REINFORCEMENT  
DETAILS

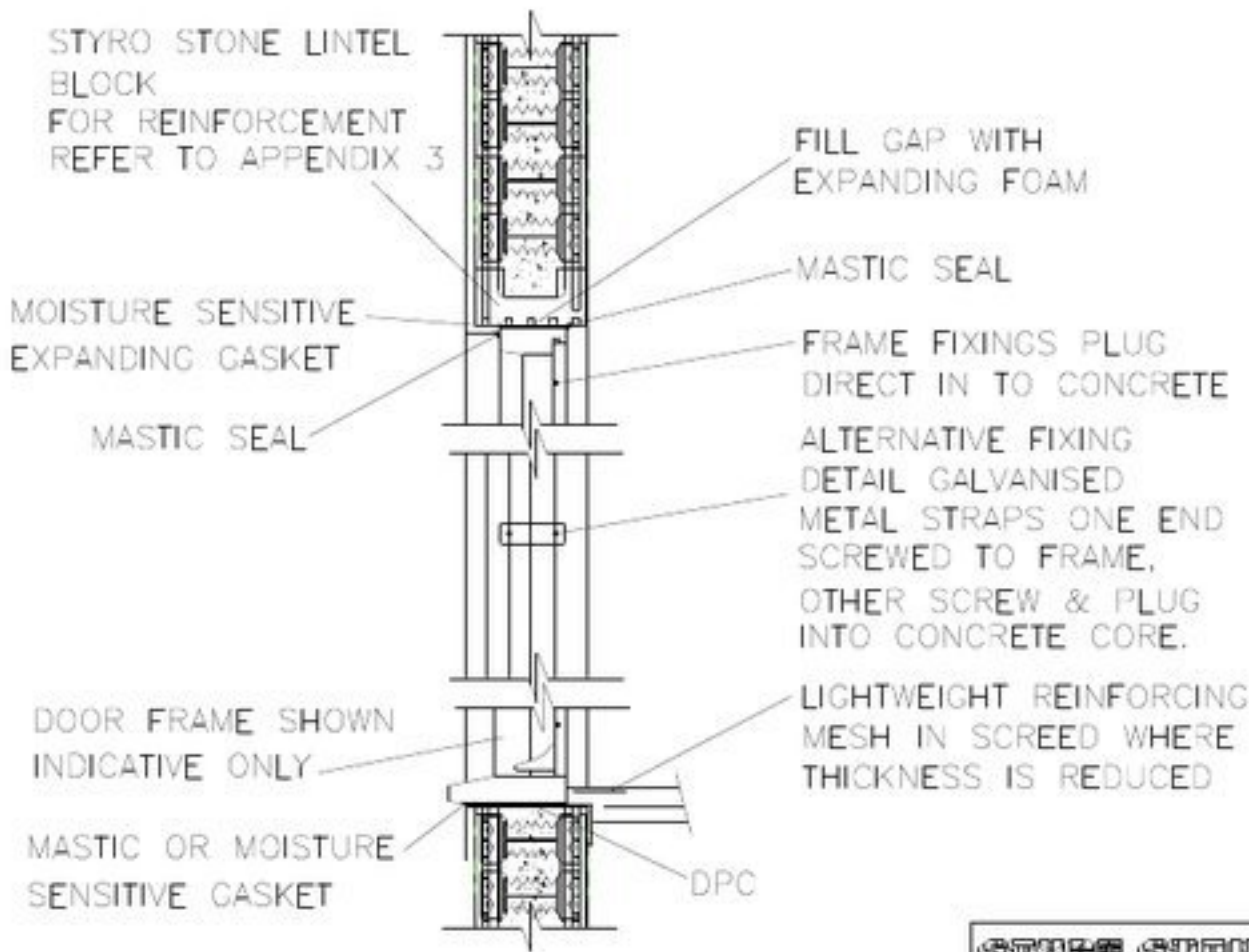


**STEEL STEEL**

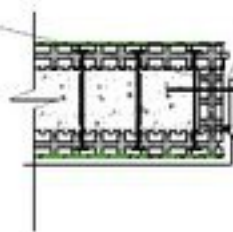
fig. 09

2007

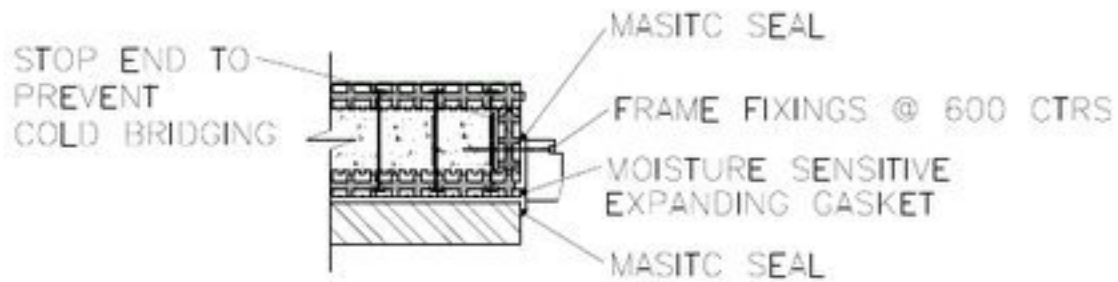




STOP END TO  
PREVENT  
COLD BRIDGING



FRAME FITTING  
CLEARANCE TO BE FILLED  
WITH EXPANDING FOAM  
FRAME FIXINGS @ 600 CTRS  
MOISTURE SENSITIVE  
EXPANDING GASKET  
MASTIC SEAL BETWEEN  
FRAME AND RENDER

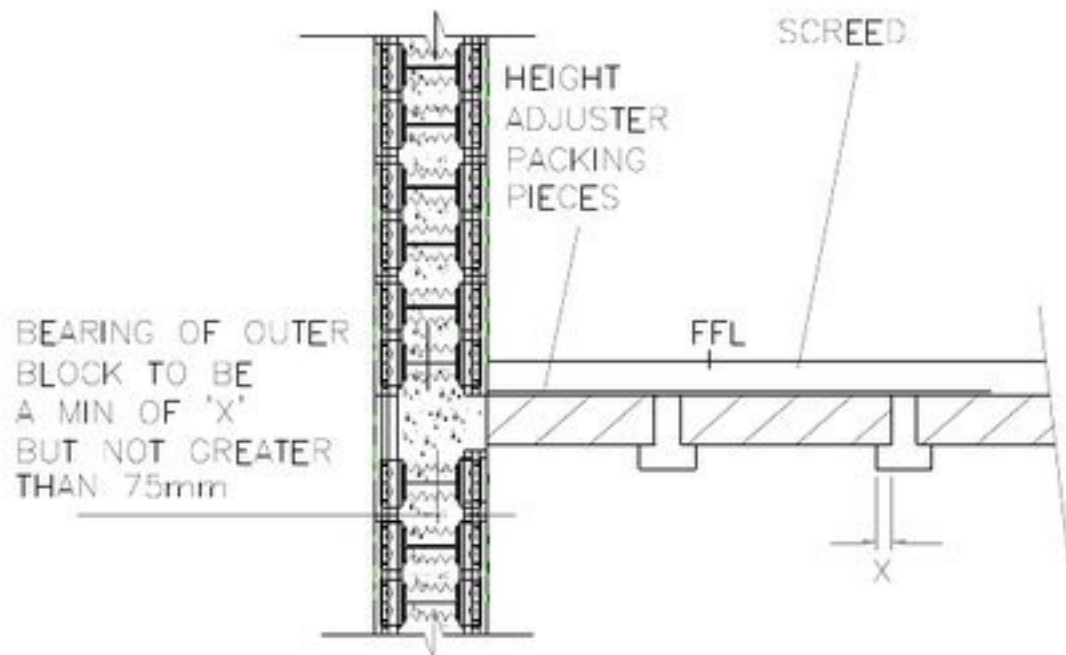


**STUSS STEINE**

Fig. 12

2007



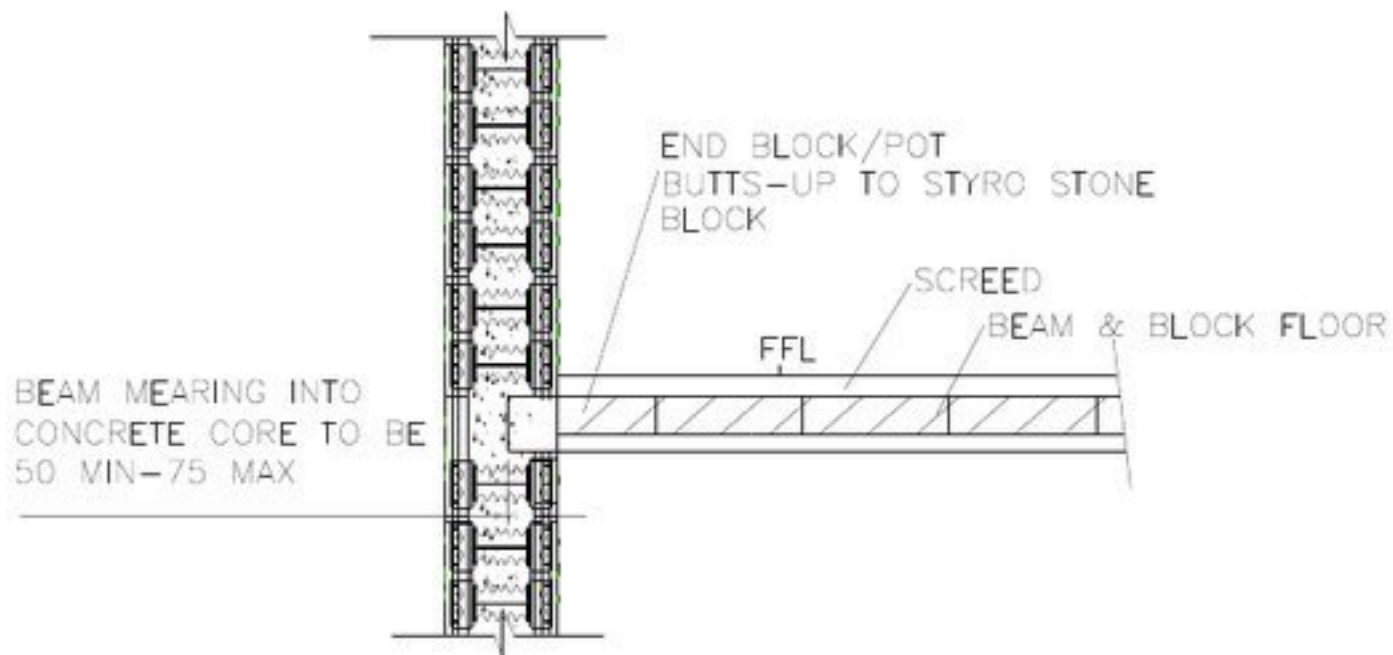


**STUBS STONE**

fig. 13

2007





**STYRO STONE**

fig. 14

2007





RAKE OUT STYRO-STONE  
BLOCK & FILL VOID WITH  
CONCRETE/SOLID PACKING

STYRO-STONE  
BLOCK STOPPED  
TO SUIT ROOF SLOPE

STRAPS WITH  
MIN 150mm  
VERTICAL LEGS

RAKE OUT  
STYRO-STONE  
BLOCK & FILL VOID  
WITH CONCRETE/  
SOLID PACKING

TIMBER PACK AT  
STRAP POSITIONS

NOGGINGS BETWEEN  
RAFTERS

RAFTER LEVEL

30X5 GALVANISED M.S.  
STRAPS CARRIED  
OVER MINIMUM  
3 RAFTERS/JOISTS,  
FIXED TO JOISTS AND  
NOGGINGS WITH  
7 No. 12X50 LONG SCREWS

CEILING LEVEL

TIMBER PACK AT  
STRAP POSITIONS

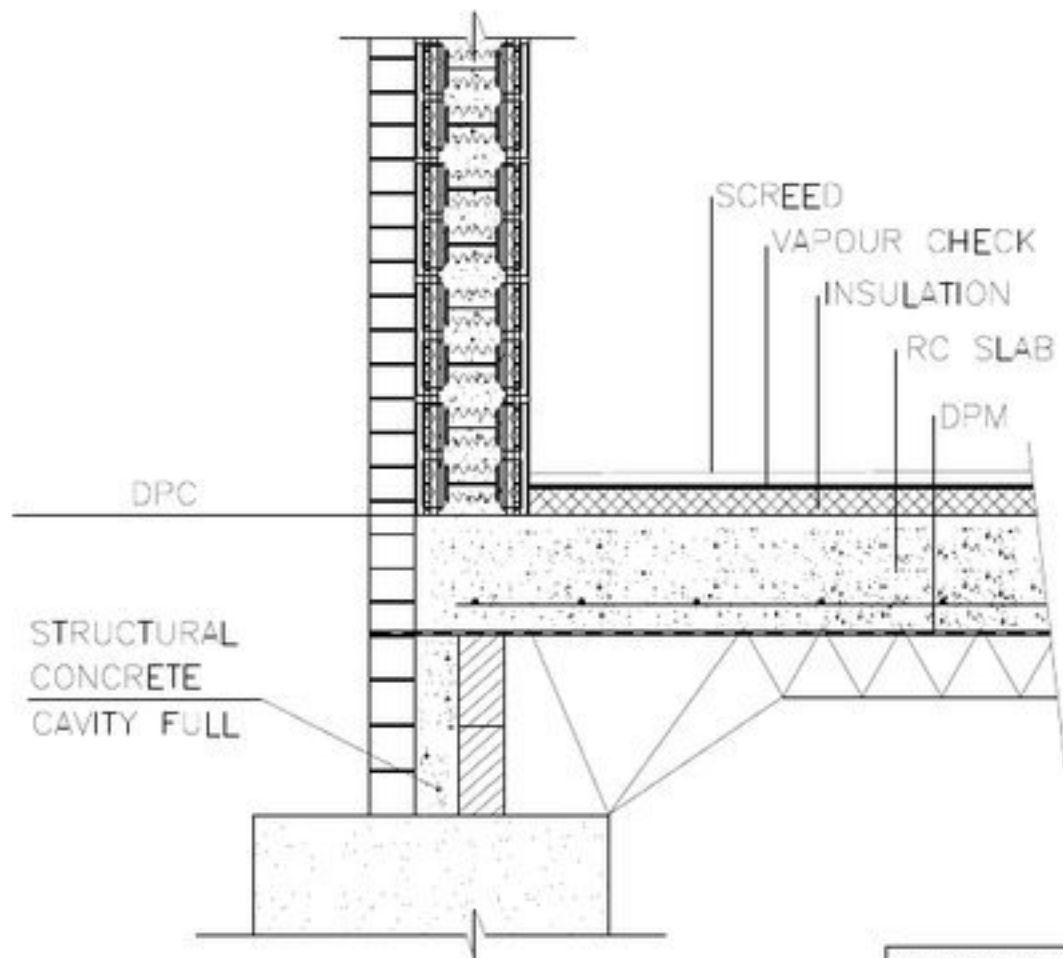
NOGGINGS BETWEEN  
CEILING JOISTS

**STYRE STONE**

Fig. 16

2007



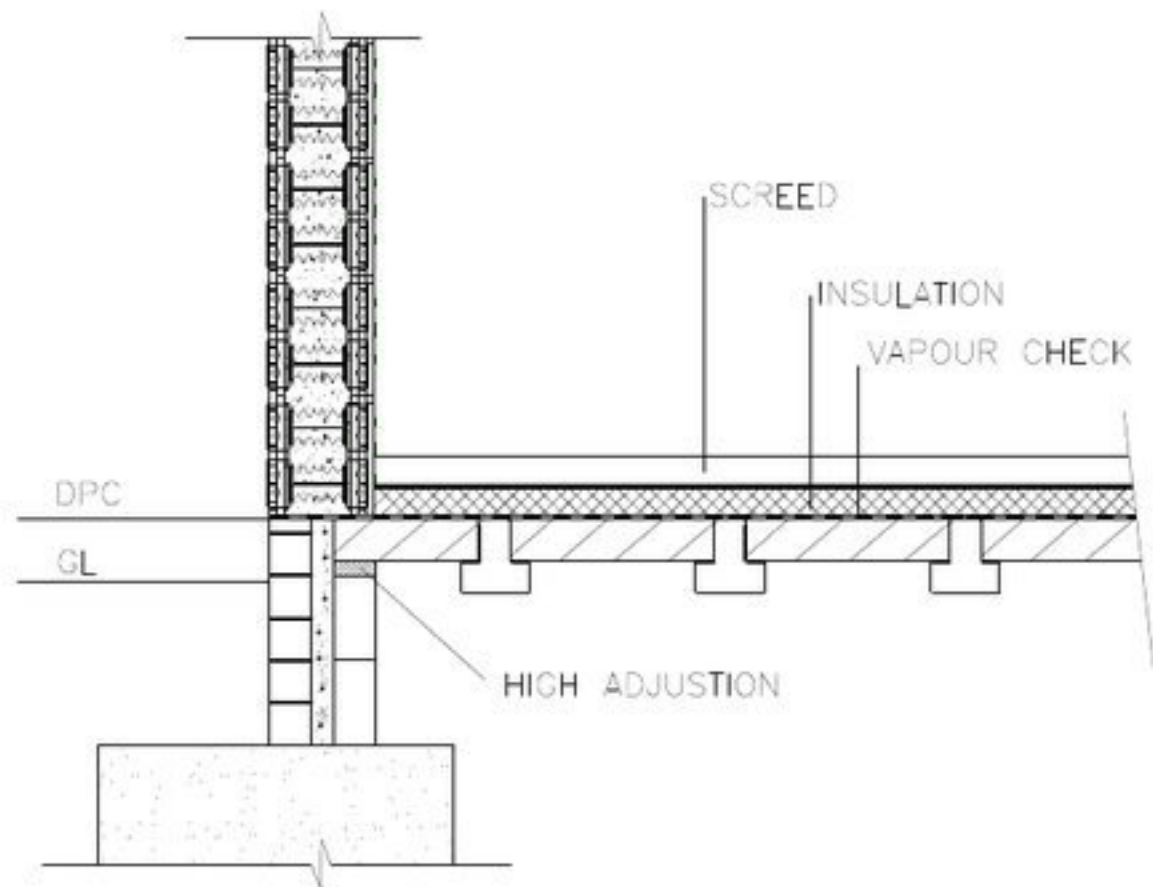


**STEEB STONE**

fig. 17

2007



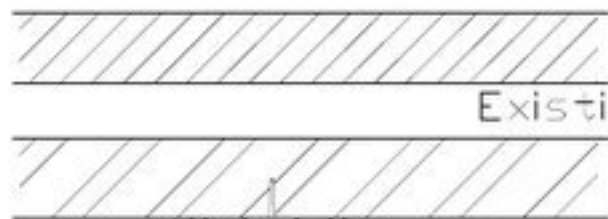


**STUBB STUBB**

fig. 18

2007





Existing Masonry Wall

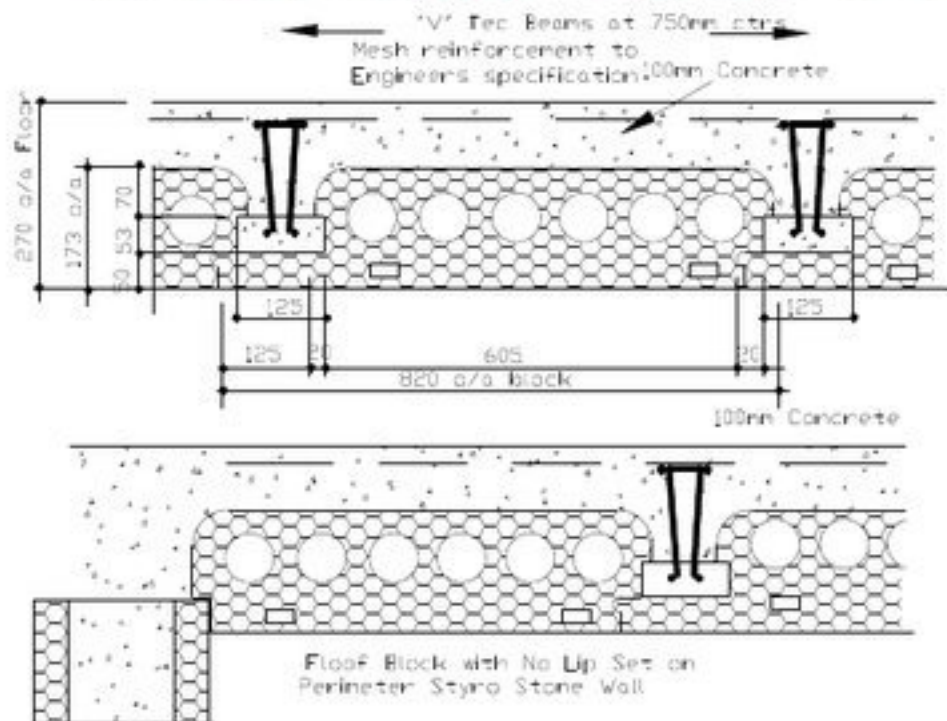
Fin Fix Profile  
or similar bolted  
to existing brick/  
block wall

APPLY FOAM ADHESIVE TO JOINT  
AND FILL ANY VOIDS.

**STONE STONE.**

21-01-0033

# STYRO STONE FLOOR SYSTEM



**STYRO STONE.**

21-01-2023